



View, access, and share your badges



Badgr | Badgr | Achieve Anything



info.badgr.com



badgr

To view and access your badges,
go to **info.badgr.com**

Sign In

Create Account

Badgr will ask you
for your university's
region



Select a Badgr region

United States



Save and Continue

Select United States
from the drop down option

Creating a new account



To create a new account, enter the **same email you used to apply to Nexford** and click **CONTINUE**

Verification Code

A message with a verification code has been sent to johndoe@gmail.com. Enter the code the continue

7 2 4 6 3 4

[Resend Code](#)

[Cancel](#)

[Continue](#)

A verification code will be sent to your email. Enter the code in the empty boxes and click CONTINUE.

You will be redirected to a sign up form. Fill in your information and click CONTINUE to finish the sign up process

Welcome to Badgr (US)!

Badgr is a global platform that stores your data in the part of the world in which it originates.

Looking for a [different region](#)?

Already have an account? [Sign in](#).

CREATE ACCOUNT WITH

[facebook](#)

[Google](#)

[Microsoft](#)

[LinkedIn](#)

[kony](#)

[Twitter](#)

OR

Enter your email to create a new account

Email *

johndoe@gmail.com

[Cancel](#)

[Continue](#)

Complete Signup

Fill in your information below to finish the signup process.

First Name *

John

Last Name *

Doe

Password (Must be at least 8 characters) *

Confirm Password *

☒ I have read and agreed to the [Terms of Service](#)

☒ Yes, I would like to receive email updates about products & services, upcoming webinars, news and events from Badgr.

[Cancel](#)

[Create Account](#)

Accessing NXU badges

When you pass a course with a digital badge, the Nexford team will send you an email to let you know that a badge is waiting in your Badgr account

Welcome to Badgr (US)!

Badgr is a global platform that stores your data in the part of the world in which it originates.

Looking for a [different region](#)?

Don't have an account? [Create an account](#).

SIGN IN WITH

facebook

Google

Microsoft

LinkedIn

kony

Twitter

OR

Email *

Enter Password *

[Forgot Password?](#)

Sign In

Boost your LinkedIn profile and resume with a Nexford badge. You've earned it!

Nexford University

Transform your resume today

Congratulations John Doe!

Phew! The course Technology Operations Management is over, and you've earned your badge. Well done!

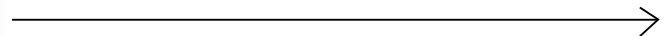
[sign into your Badgr](#)

account to view all your badges. When you get to the Sign In page click on the Microsoft logo to access your account and go to Backpack to view your badges!

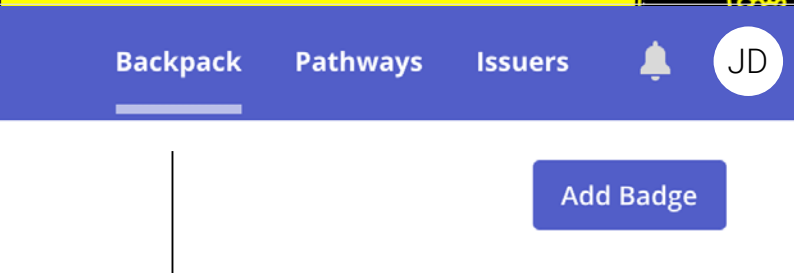
Claim my badge

Sign in

Use the email you used to register in nexford and enter your password to access your backpack

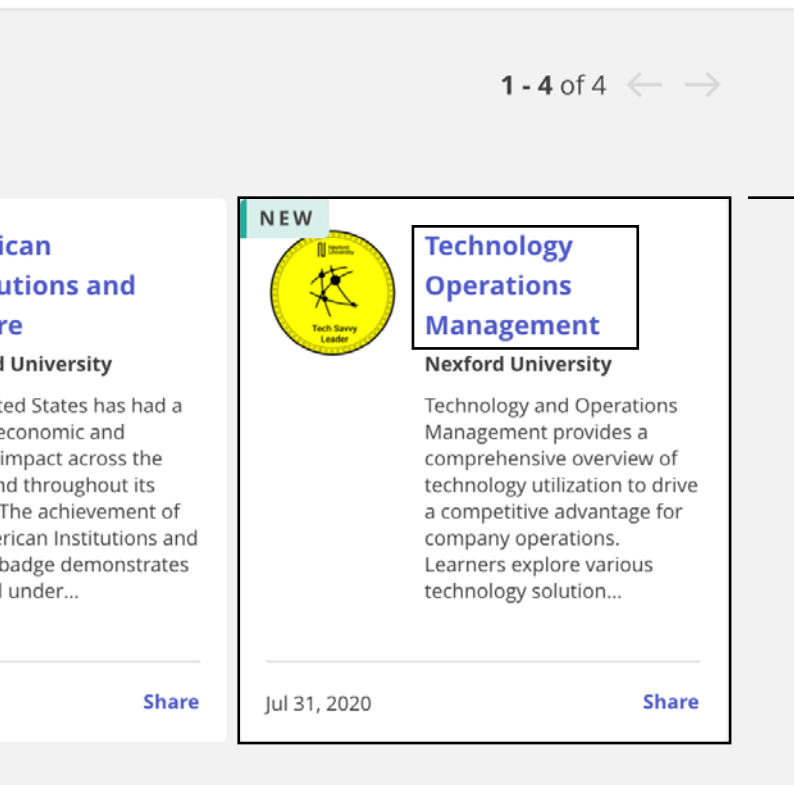


Accessing NXU badges



Backpack

Allows you to access the badges awarded to you




Badges

Preview of the badge with title, and description

To access the full description of the badge, click the title



Sharing your badge in Social Media



Technology Operations Management
Nexford University

Technology and Operations Management provides a comprehensive overview of technology utilization to drive a competitive advantage for company operations. Learners explore various technology solution...

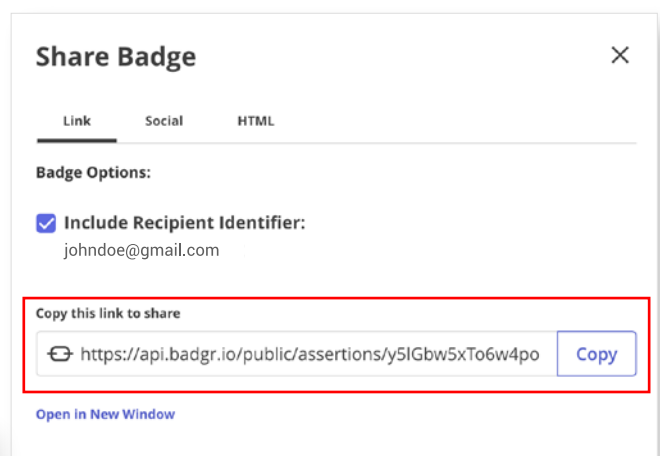
Jul 31, 2020 [Share](#)

Share

Shows you how you can share your badge on social media

Option 1

Copy this link and paste it onto your post. Edit your caption



Share Badge

Link Social HTML

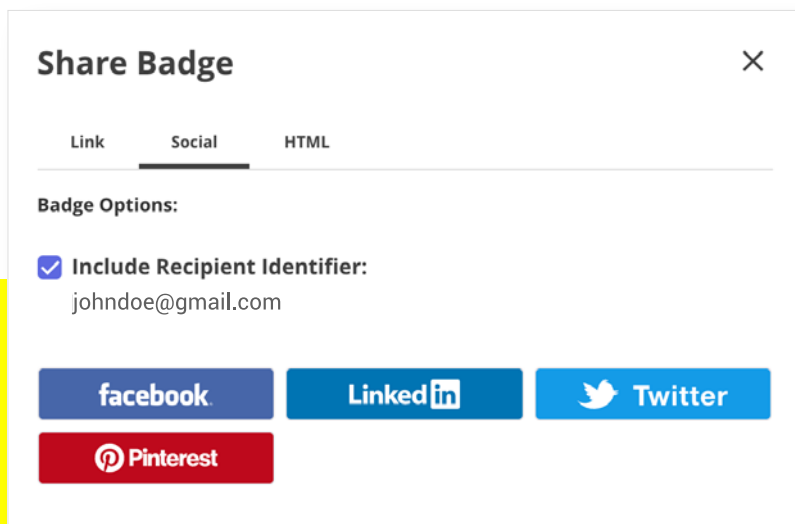
Badge Options:

☒ Include Recipient Identifier:
johndoe@gmail.com

Copy this link to share

<https://api.badgr.io/public/assertions/y5lGbw5xTo6w4po> [Copy](#)

[Open in New Window](#)



Share Badge

Link Social HTML

Badge Options:

☒ Include Recipient Identifier:
johndoe@gmail.com

[facebook](#) [LinkedIn](#) [Twitter](#) [Pinterest](#)

Option 2

Choose where you want to post your badge on social media

Add your badge to
your LinkedIn
Credentials

LinkedIn

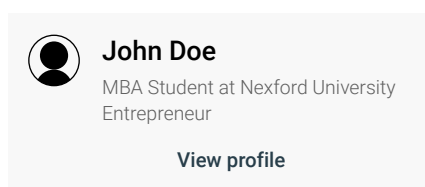


How to add
a badge to your
LinkedIn profile

Click the **Me** icon at the top
of your LinkedIn homepage



Click **View profile**

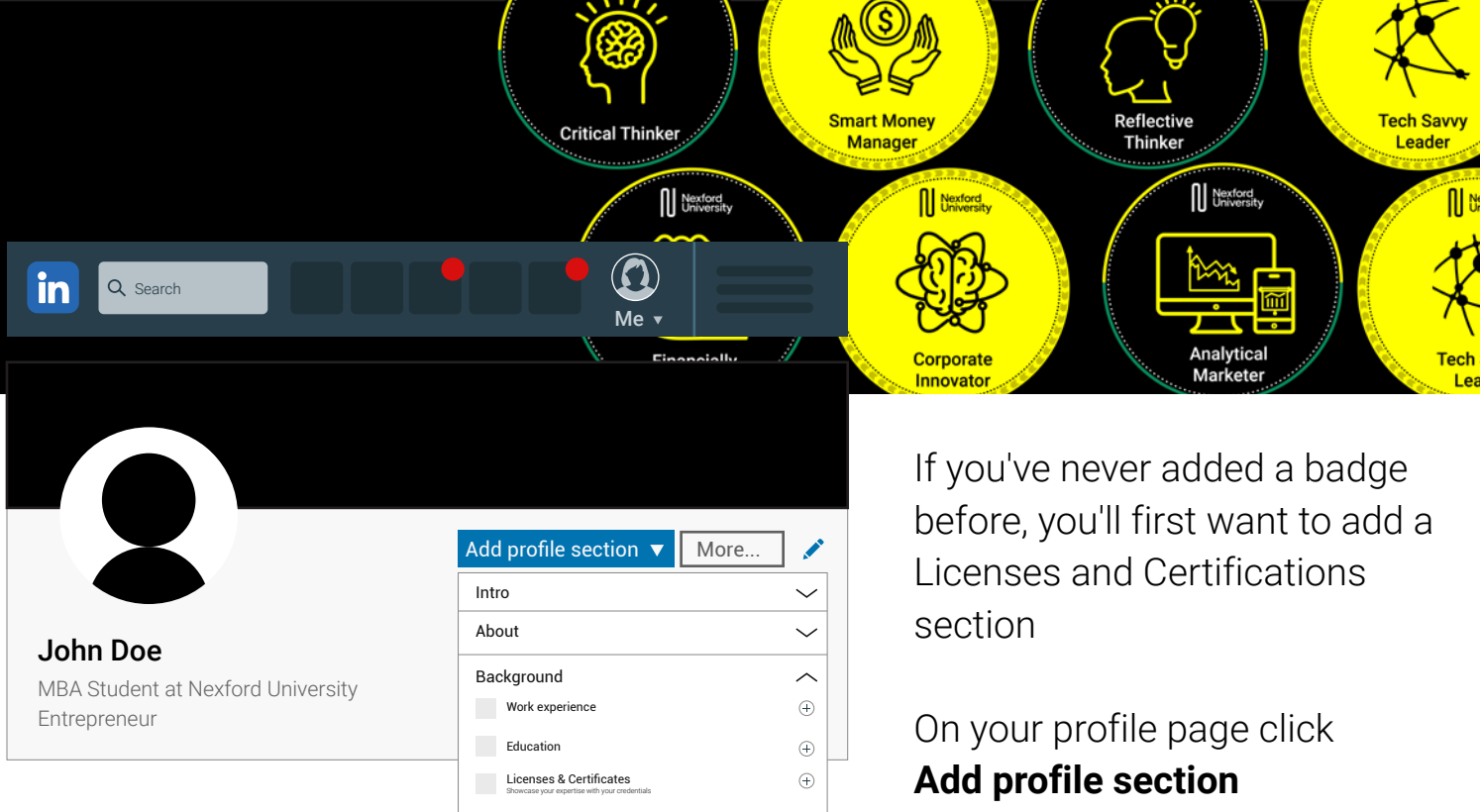


If you've previously
added a certification
like a badge, scroll
down to the **Licenses &
Certifications** section
and click **+ Add**

Certification



Tech Savvy Leader
Nexford University
2019 - Present



If you've never added a badge before, you'll first want to add a Licenses and Certifications section

On your profile page click **Add profile section**

Then, select **Background**, and click the **+ Add icon** next to **Licenses & Certifications**

Add licenses & certifications

Name*

Example: Intro to Business

Issuing Organization*

Nexford University

☒ This credential does not expire

Issue Date

Month

Year

Expiration Date

Credential ID

Credential URL

Save

Type in your certification information

Name

This is the badge name. You'll find it on the badge verification page and in your email.

Issuing organization

Nexford University. A menu displaying companies will appear as you type in the Issuing Organization field. Be sure to select Nexford University from the menu so our logo appears next to the certification on your profile.

This credential does not expire

Check this box. Your certificate will always be valid.

Issue date

Select the date of the badge notification email.

Credential ID

Leave this field empty.

Credential URL

Click the link to your badge, which you've received in the email from Nexford.

Click Share, check "Include Recipient Identifier" and copy this link to the Credential URL field.

Click Save

Want to see your badge on your profile?

Scroll down to the Licenses & Certifications section and there it is!
It's a great record of the skills you've earned